

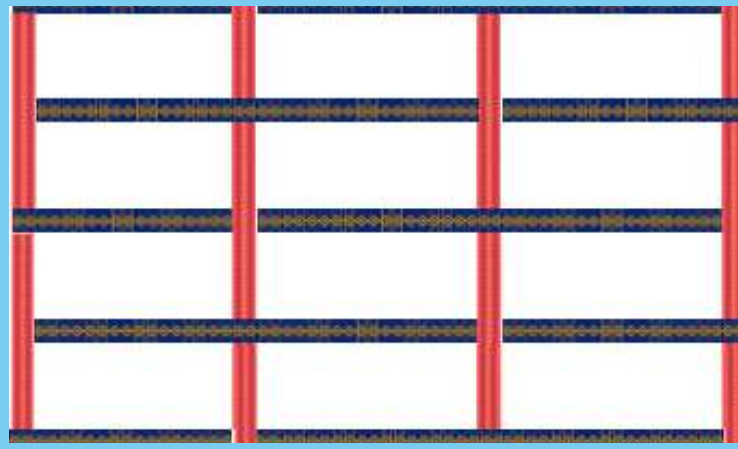
# TOP 3 FUNDAMENTAL TYPES OF TEXTILE WEAVES

Description and uses

## PLAIN WEAVE

Most basic weave out there. Each horizontal weft is interlaced with each vertical warp thread. The pattern is "over (the first string) and under (the second string) and so on etc."

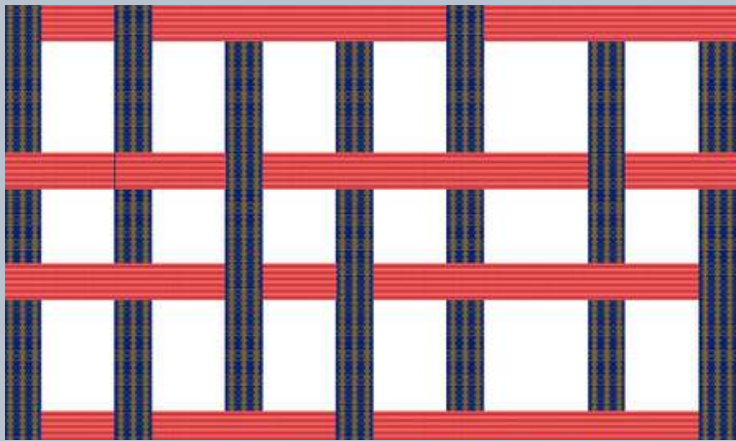
Most versatile and solid out of the 3 weave types, also doesn't fray as easily.



## TWILL WEAVE

Characterized by "diagonal" lines created when the warp (vertical string) is stretched over and under two or more weft (horizontal threads.)

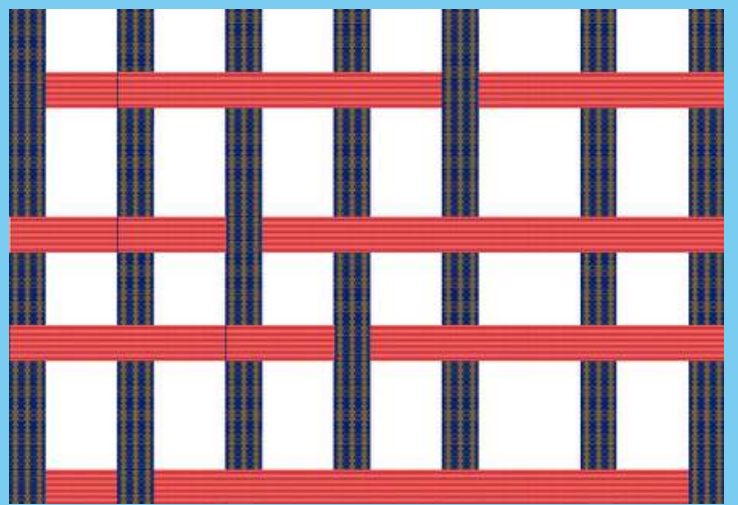
Has great versatility and is highly durable, also hides stains well due to thickness.



## SATIN WEAVE

When the weft (horizontal) threading passes over multiple warp (vertical) threads.

Has a very smooth surface, soft handling, and top-notch drape - also higher cost than twill weave (due to thickness and higher yarn count.)



Contact me at [@domjeswal](#) on IG for any more questions!